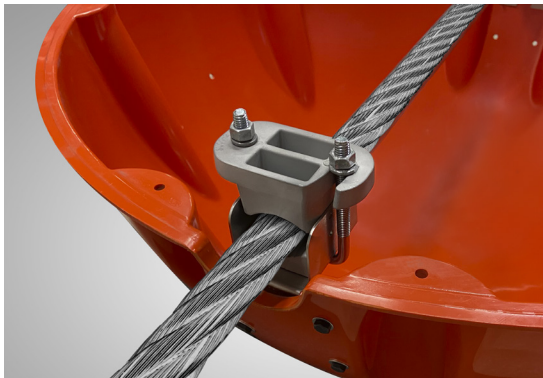


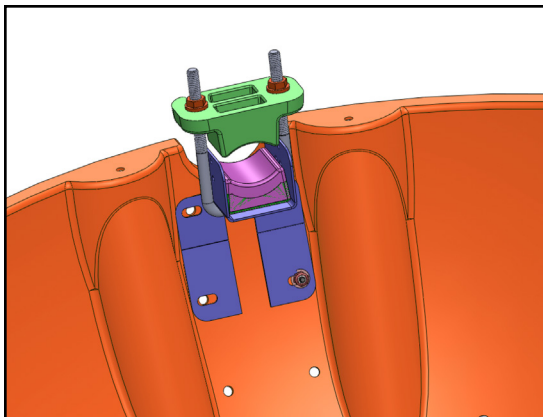
## PRM-36 ABS & Aluminum Power Line Markers



**PRM-36 ABS Power Line Marker installed over complete set of armor rods**



**Universal clamp grips line securely (armor rods not shown)**



**Universal clamp illustrated (CAD drawing)**

The PRM-36 is a 36-inch diameter power line marker and features a universal clamp system for installation on conductors, OPGW, or static lines. This allows the PRM-36 to be stocked and used wherever and whenever needed.

**Note: It is highly recommended that a complete set of armor rods be installed on the line before the PRM-36 is installed. Armor rods are not included.**

### PRM-36 Applications

The FAA advises that 36" power line markers be used on high transmission lines and hazardous river crossings. Each power line marker should be a solid color—international orange, yellow, or white—and the FAA suggests that alternating colors be used on critical lines to optimize visibility in all seasons. See FAA Advisory Circular 70/7460-1M (Nov. 2022).

### PRM-36 Models

Available in ABS and aluminum models, the PRM-36 is identical to our industry standard 36-inch SpanGuard markers, which attach directly to the line with armor rods, not clamps. (SpanGuard markers are made to order and have a longer lead time.)

As an ABS marker, the PRM -36 is rated for live lines up to 115 kV. As an aluminum marker, it is rated up to 500 kV and 482° F (250° C).

### PRM-36 Assembly & Installation

The PRM-36 is simple to install on the ground or from a bucket. The universal clamps have a large surface compression grip for lines from 0.50" to 2.25". Clamps for smaller line sizes are available by special order.

The compression grip consists of two castings. The base casting, shown in pink in the CAD drawing at left, measures 2.25" x 2.25". The upper casting, shown in green, measures 4.25" x 2.25" and is attached after positioning the marker on the conductor.

### PRM-36 Ordering Information

Lead times for PRM-36 power line markers vary with demand. Part numbers are shown below.

Material:	ABS	Aluminum
Voltage up to:	115 kV	500 kV
Temperature up to:	—	482° F (250°C)
Orange	PRM-36-O	PRM-AL36-O
Yellow	PRM-36-Y	PRM-AL36-Y
White	PRM-36-W	PRM-AL36-W