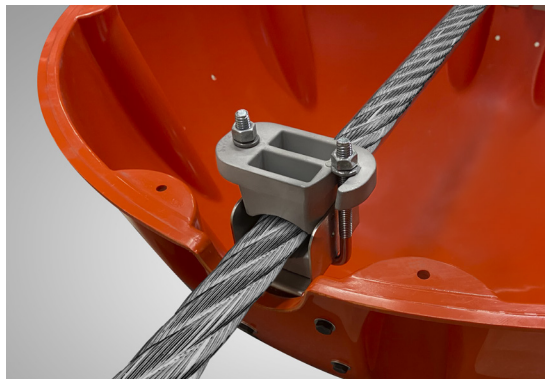


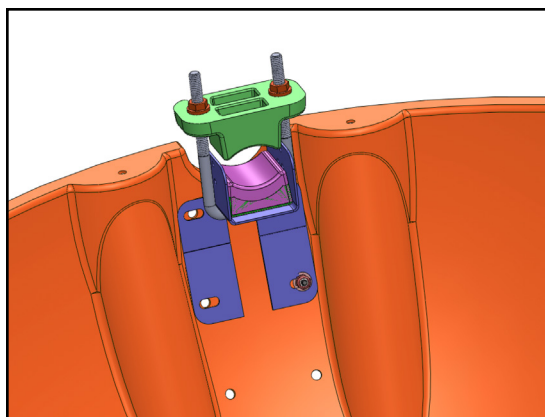
PRM-36 ABS Power Line Marker



PRM-36 ABS Power Line Marker installed over complete set of armor rods



Universal clamp grips line securely (armor rods not shown)



Universal clamp illustrated (CAD drawing)

Featuring a new universal clamp system to fit conductors, OPGW, or static lines from 0.50 to 2.25 inches, the PRM-36 is otherwise identical to our industry standard 36-inch SpanGuard ABS Power Line Marker.

Note: It is highly recommended that a complete set of armor rods be installed on the line before the PRM-36 is installed. Armor rods are not included.

PRM-36 Applications

The FAA advises that 36" power line markers be used on high transmission lines and hazardous river crossings. Each power line marker should be a solid color—international orange, yellow, or white—and the FAA suggests that alternating colors be used on critical lines to optimize visibility in all seasons. See FAA Advisory Circular 70/7460-1M (Nov. 2022).

PRM-36 Assembly & Installation

The PRM-36 is rated for live lines up to 115 kV and is easy to install on the ground or from a bucket. The universal clamp system allows the PRM-36 to be stocked and used wherever and whenever needed.

The PRM-36 comes with two stainless steel mounting pads that bolt directly to the inside of the ABS marker shell. Each mounting pad carries a universal clamp with a large surface compression grip for lines from 0.50" to 1.50", or from 1.50" to 2.25". Line size must be specified at time of order to ensure the correct configuration of the universal clamp.

The compression grip consists of two castings. The base casting, shown in pink in the CAD drawing at left, measures 2.25" x 2.25". The upper casting, shown in green, measures 4.25" x 2.25" and is attached after positioning the marker on the conductor.

PRM-36 Ordering Information

Lead times for PRM-36 power line markers vary with demand. *Line size and marker color is required at time of order!*