

PoleLite™ Self-Illuminated Tower Obstruction Light



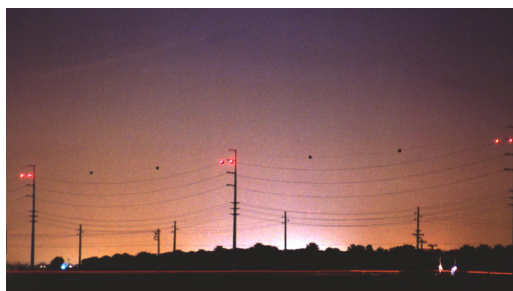
PoleLite powers two red 810 FAA lights



PoleLite identifies remote poles



Over a heliport outside football stadium



PoleLites instead of solar lights in Arizona

Driving two steady red L-810 IR-LED lights, PoleLite meets and exceeds FAA and ICAO standards for identifying towers and monopoles up to 150 feet high. PoleLite is self-illuminating (no wiring needed) and attaches directly to the live conductor near the tower.

- PoleLite meets or exceeds FAA Advisory Circular 70/7460-1M (Nov. 2020), which calls for two steady red L-810 FAA lights on structures up to 150 feet tall.
- Our patented Flux Capacitor utilizes the excess electrical field around the line to illuminate two steady red FAA L-810 IR-LED lights. The infrared LEDs are visible to pilots wearing night vision goggles (per FAA Engineering Brief No. 98).
- The line must carry 40–2,000 Amps to properly illuminate both lights at the required 32.5 candela each.
- PoleLite installs directly on any live conductor carrying 15 kV to 500 kV.
- PoleLite can also be flashed and is available either with red IR LEDs, or with green LEDs.
- LED technology ensures many years of operation with little or no maintenance.
- PoleLite employs the same technology used in our SpanLite™ self-illuminated power line marker, which has been installed worldwide since 2006.

PoleLite Materials & Installation

- The aluminum housing is 12" in diameter and its wall is less than 0.1" thick.
- The housing is powder coated with black acrylic poly paint, then baked for a durable paint finish.
- The lower half of PoleLite is installed on the line with two U-bolt clamps (inside the housing) for secure attachment to lines up to 2" in diameter. The top half of PoleLite is then bolted on to complete the installation.
- It is recommended that armor rods be installed between the clamps and the line to ensure no damage to the line.

PoleLite Ordering Information

Allow 4–12 weeks in advance of installation, or longer during the peak summer season or for special orders.

SpanLite Model	Marker Diameter	Light-to-Light Height*	Line Voltage	Line Amperage	Net Weight
PL12-2	12 inches	20 inches	15 kV – 500 kV	40–2,000 A	17 lbs

*Outside dimension